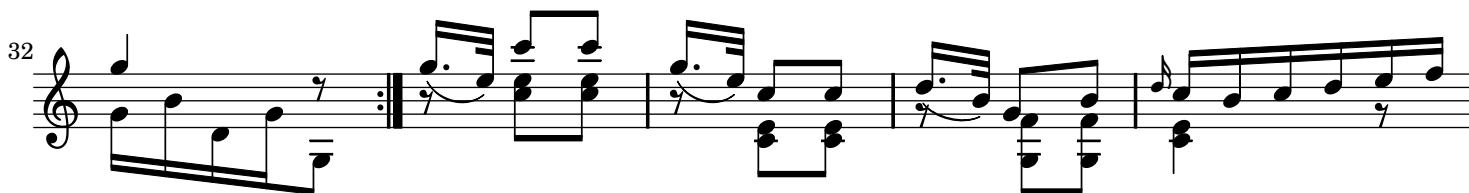
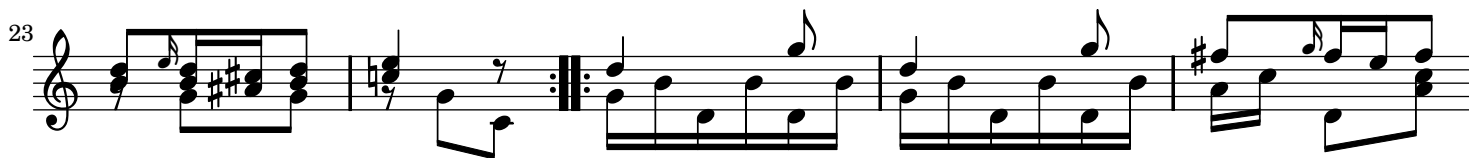
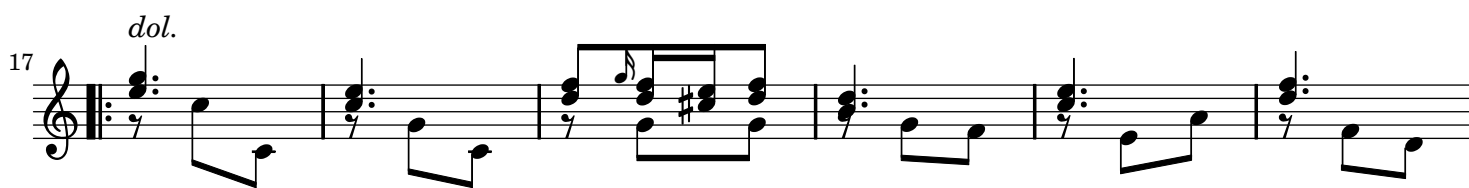
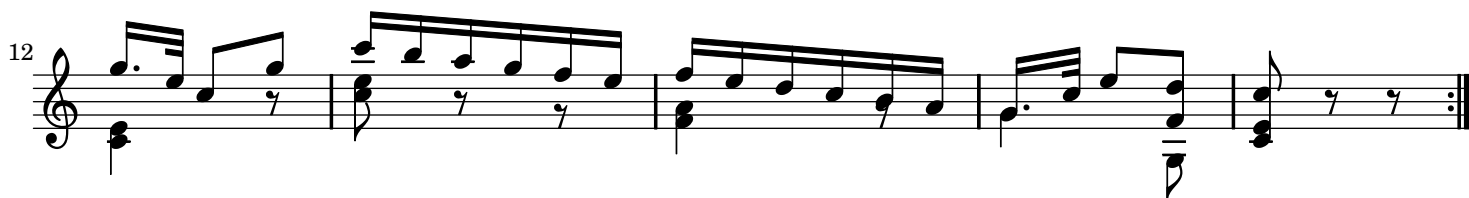
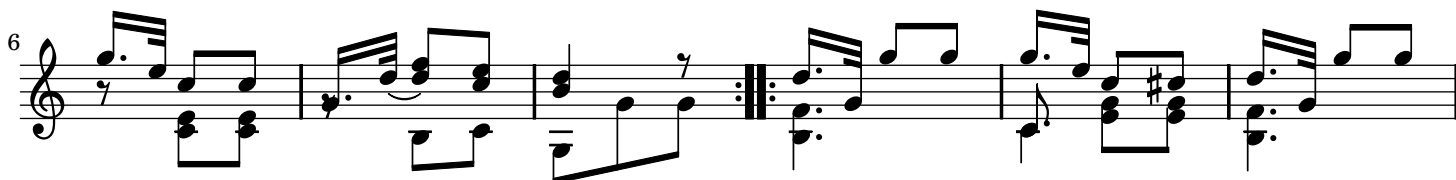
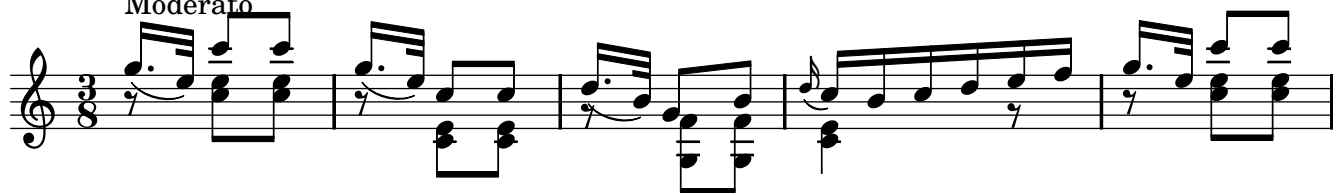


# Valse

Fernando Sor

Moderato



43



A musical score for six measures, numbered 43 to 48. The notation is written on a single staff with a treble clef. Measure 43 begins with a treble clef and a key signature of one flat. The melody consists of eighth and quarter notes. Measure 44 features a dotted quarter note followed by an eighth rest. Measure 45 contains a quarter rest. Measure 46 has a dotted quarter note followed by an eighth rest. Measure 47 features a dotted quarter note followed by an eighth rest. Measure 48 concludes with a quarter rest. The piece ends with a double bar line.